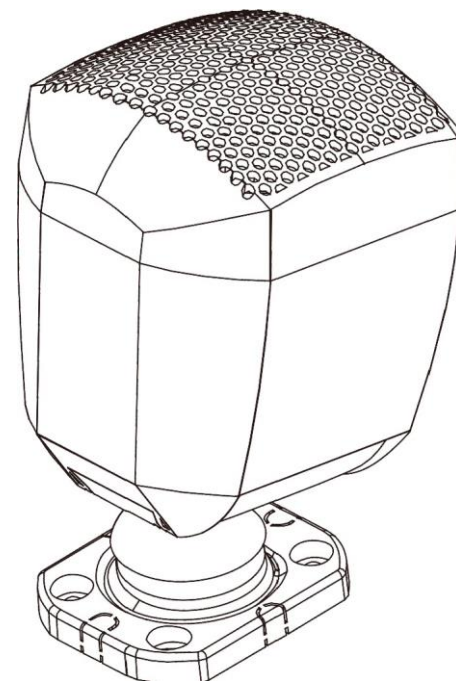




Mini Satellite Wallmount Speaker



IsPECIFICATIONS

MODEL	
Woofer	4" Paper Cone
Frequency Response ($\pm 3\text{db}$)	120Hz-20kHz
RMS Power	20W
Sensitivity	83 \pm 2dB
Max SPL(1m)	97 \pm 2dB
Transformer	70V/100V
Nominal Impedance	8 Ω
Attachment	bracket/screw
Product Dimensions	148x27x138mm
Housing Material	ABS
Net. Weight	1.23kg

IcARE AND MAINTENANcE

hlijh.j.@

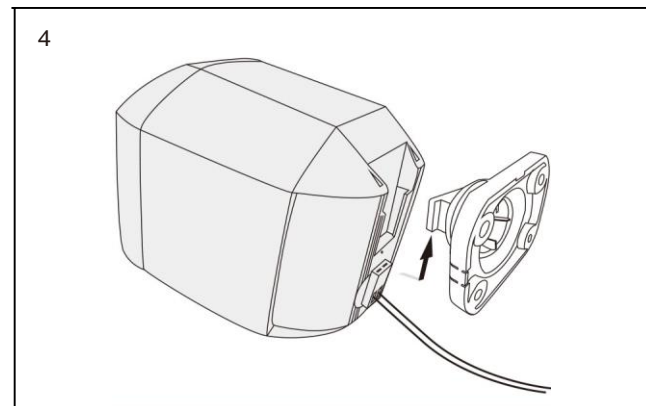
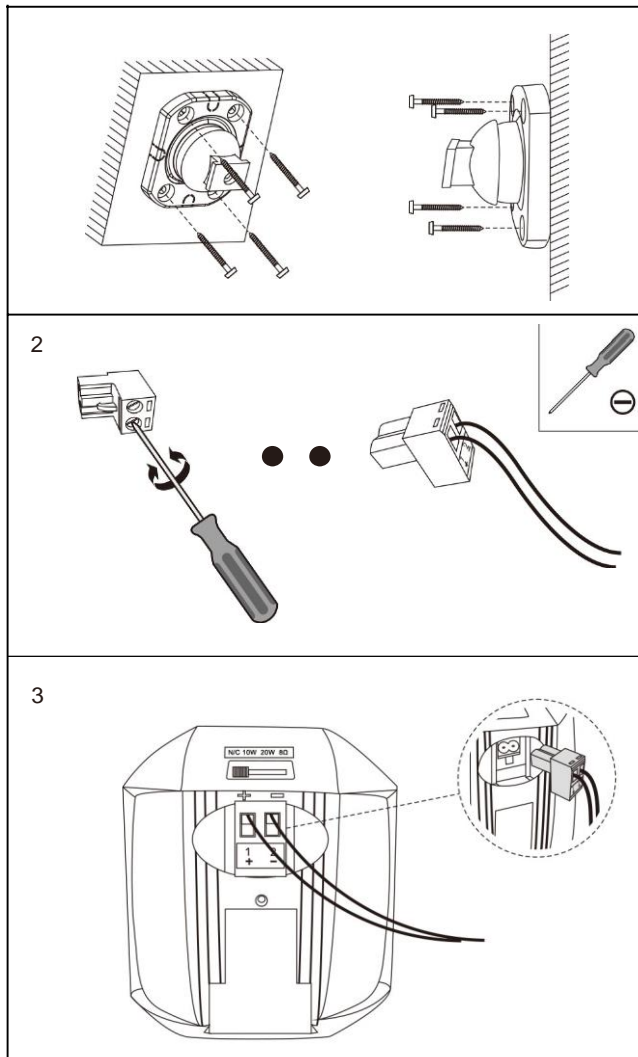
- Make sure to turn all equipment off before cleaning.
- The cabinet only needs occasional dusting. Please do not touch the drive units.
- Do not attempt to clean the speakers with chemical solvents as this may damage the paint surface.
- Clean with a dry cloth.

SAFETY INSTRUCTIONS

- 0** When the speakers are installed on the walls, ensure the wall structure is reliable and that the speakers are firmly attached.
- @** Install the speaker in a location that can structurally support the weight of the speaker and its mounting hardware. Otherwise it may result in the unit falling down and causing personal injury.
- @** Do not use nails, adhesives or other unauthorized devices. Long-term use and vibrations may cause it to fall easily.
- G,** Do not touch or bump the woofer and tweeter. If these are damaged, the sound will be distorted.
- @** Do not listen to sound at a very high level when you are changing the input source (for example, to tune FM/ CD) Installation or removal of cables should make sure that the power amp/ amplifier device radio is turned off.

INSTALLATION

- Q** Fix the bracket to the wall.
- @** Connect the speaker wire.
- @** Attach phoenix connector to the speaker.
- G,** Attach the speaker to the bracket.



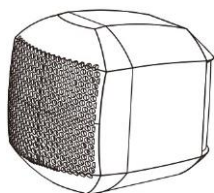
Underpower VS. Overpower

- 8** Most speaker damage is caused by amplifiers with too little power (wattage).
- @** An overdriven amplifier clips the waveforms and leads to speaker distortion.
- @** Clipping is usually audible and it may vary from a harsh sound to a fuzzy or unclear sound.
- G,** If you hear the clipping at high volume levels, turn down the volume until the distortion is gone.
- @** Damage caused by operating the speakers at distorted volume levels is not covered by the warranty.

Volume Control

- 0** The volume is controlled by your active speaker.

PACKING LIST



passive speaker X2



ball-joint bracket X2

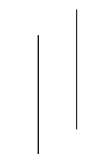


phoenix connector X2

screws XS



screws XS



user manual