



## Public Address System HIP-663 Ceiling Speaker



### OWNER'S MANUAL

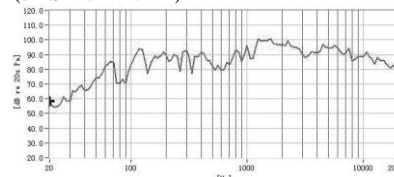
Thank you for purchasing PA speaker system. All of our products have been tested strictly before shipping. Our PA speaker system is widely used in hotel, trade building, supermarket, school, entertainment, etc. It's the most ideal choice of you! In order to facilitate installing, modulating and running please read this manual carefully before setup.

#### FEATURES:

- Adopt fashionable rounded edges and carbon alloy aluminum mesh with RAL white coating so as to integrate with any indoors perfectly.
- Equipped with 6.5" full-range loudspeaker with magnetic circuit encapsulated with special engineering plastic process, and the drum paper formed with tripping and hot pressing of algae salved organisms, for super-strong reproduction of voice and music.
- In compliance with IEC268-5 PHC standard, it can work continuously for 100 hours and carry out SAFE test under the rated power, and can bear twice rated power in a short time, which ensures the reliability of the speaker under extreme conditions, extends service life and greatly reduces the chance of failures or performance degradation.

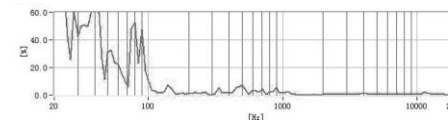
#### FREQ. RESPONSE

(dB SPL, 1W, 1m)

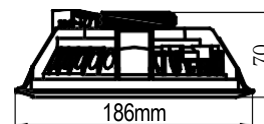


#### DISTORTION

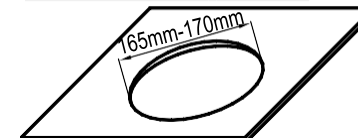
(THD < 1.5% 1W, 1m, 100Hz-10kHz)



#### DIMENSIONS



#### MOUNTING HOLE



#### SPECIFICATION

<b>Model</b>	<b>HIP-663</b>
<b>Unit Driver</b>	6.5"×1
<b>RMS</b>	6W
<b>MAX. POWER</b>	10W
<b>Rated Input</b>	70/100V
<b>Sensitivity (1m, 1W)</b>	90dB±2dB
<b>MAX. SPL. (1m)</b>	92dB±2dB
<b>Freq. Resp.</b>	90-20kHz
<b>Cutout size</b>	∅165-∅170mm
<b>Dimension</b>	70mm×186mm
<b>Weight</b>	0.66kg

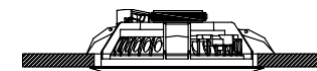
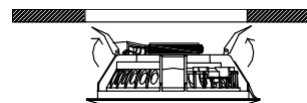
#### INSTALLATION

1. Cut a mounting hole on the ceiling with a diameter of 165-170mm (as shown above)
2. Adjust the clamps of the speaker based on different ply of ceiling.
3. Connect audio broadcasting wire to the terminals according to the table below.

Power Terminals	Line Voltage	70V	100V
Black---Blue		3W	6 W
Black--- White		6W	10W*

Note: The "10W\*" is the MAX power of the speaker. If you connect this line to work for a long time, it might have damage to the speaker.

4. Turn up the clamps of the speaker and insert them into the mounting hole on ceiling and then release them as shown below. (It is recommended to wear your working gloves for safety.)



5. Finally, check that it is secure and steady.